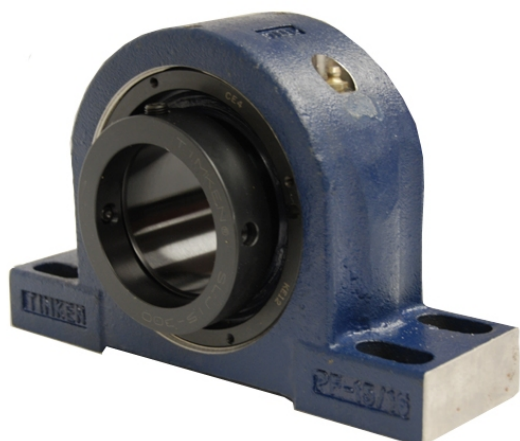


# royal Bearing Housed Units-Eccentric Four-Bolt Pillow Block | QMPF13J207S



## Bearing No. QMPF13J207S

Weight	Imperial
Bearing Number	4.15
Housing Construction	2.79
UPC Code	20 lb9.10 Kg
Shaft Size Type	0883450083324 0883450083331 0883450083355 0883450083362 0883450083379 0883450083386 0883450083393 08
Full Timken Part Number	0.0015 in0.038 mm
Locking Style	2-7/16 in
Y2 - Geometry Factor	0.0016 in0.040 mm
Y1 - Geometry Factor	0.0026 in0.065 mm
Shaft Tolerance	3200 rpm
Shaft Size	1800 rpm
Pre Install Clearance Min	1500 rpm
Pre Install Clearance Max	Eccentric