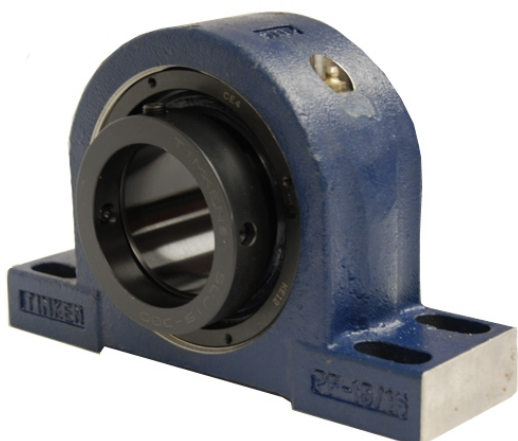


royal Bearing Housed Units-Eccentric Four-Bolt Pillow Block | QMPF13J065S



Bearing No. QMPF13J065S

Weight	Metric
Bearing Number	4.15
Housing Construction	2.79
UPC Code	20 lb9.10 Kg
Shaft Size Type	0883450083225 0883450083232 0883450083256 0883450083263 0883450083270 0883450083287 0883450083294 08
Full Timken Part Number	0.0015 in0.038 mm
Locking Style	65 mm
Y2 - Geometry Factor	0.0016 in0.040 mm
Y1 - Geometry Factor	0.0026 in0.065 mm
Shaft Tolerance	3200 rpm
Shaft Size	1800 rpm
Pre Install Clearance Min	1500 rpm
Pre Install Clearance Max	Eccentric