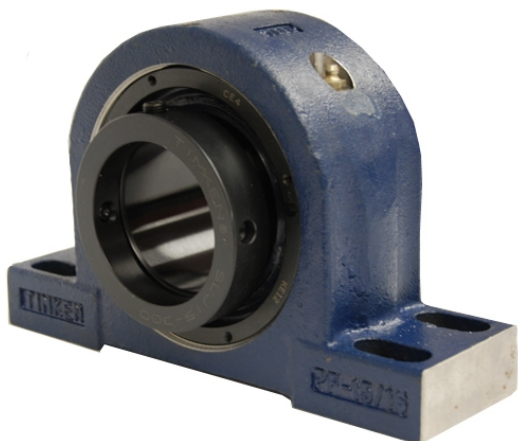


royal Bearing Housed Units-Eccentric Four-Bolt Pillow Block | QMPF13J060S



Bearing No. QMPF13J060S

Weight	Metric
Bearing Number	4.15
Housing Construction	2.79
UPC Code	20 lb9.10 Kg
Shaft Size Type	0883450250597 0883450251013 0883450294720 0883450294737 0883450294744 0883450294751 0883450294768 08
Full Timken Part Number	0.0015 in0.038 mm
Locking Style	60 mm
Y2 - Geometry Factor	0.0016 in0.040 mm
Y1 - Geometry Factor	0.0026 in0.065 mm
Shaft Tolerance	3200 rpm
Shaft Size	1800 rpm
Pre Install Clearance Min	1500 rpm
Pre Install Clearance Max	Eccentric