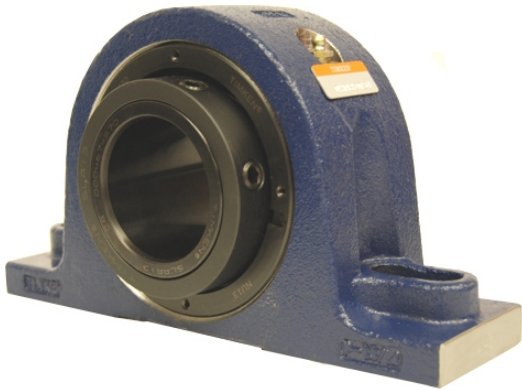


# loyal g Housed Units-Single Concentric Two-Bolt Pillow Block | QAPL20A400S



**Bearing No. QAPL20A400S**

Weight	Imperial
Bearing Number	4.24
Housing Construction	2.85
UPC Code	59.0 lb26.8 Kg
Shaft Size Type	0883450048408 0883450048415 0883450048439 0883450048446 0883450048453 0883450048460 0883450048477 08
Full Timken Part Number	0.0030 in0.076 mm
Locking Style	4 in
Y2 - Geometry Factor	0.0030 in0.075 mm
Y1 - Geometry Factor	0.0047 in0.120 mm
Shaft Tolerance	2000 rpm
Shaft Size	1200 rpm
Pre Install Clearance Min	900 rpm
Pre Install Clearance Max	Single Concentric