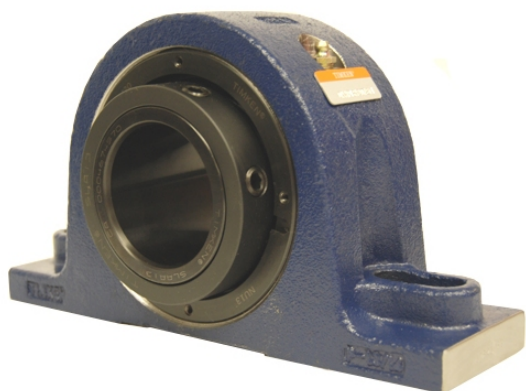


loyal g Housing Units-Single Concentric Two-Bolt Pillow Block | QASN10A050S



Bearing No. QASN10A050S

Weight	Metric
Bearing Number	4.23
Housing Construction	2.84
UPC Code	28 lb12.7 Kg
Shaft Size Type	0883450351744 0883450351751 0883450351768 0883450351775 0883450351782 0883450352772 0883450352789 08
Full Timken Part Number	0.0015 in0.038 mm
Locking Style	50 mm
Y2 - Geometry Factor	0.0016 in0.040 mm
Y1 - Geometry Factor	0.0026 in0.065 mm
Shaft Tolerance	4200 rpm
Shaft Size	2400 rpm
Pre Install Clearance Min	1800 rpm
Pre Install Clearance Max	Single Concentric