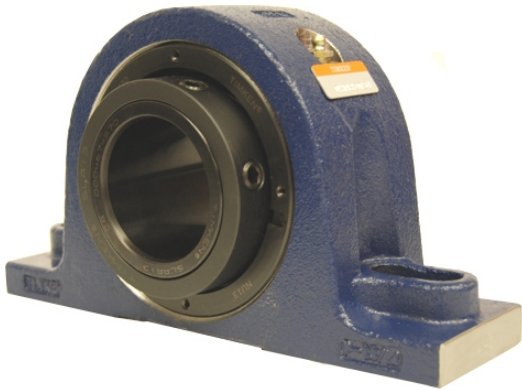


# loyal g Housing Units-Single Concentric Two-Bolt Pillow Block | QAPL18A307S



**Bearing No. QAPL18A307S**

Weight	Imperial
Bearing Number	4.31
Housing Construction	2.90
UPC Code	45 lb20.40 Kg
Shaft Size Type	0883450048101 0883450048118 0883450048132 0883450048149 0883450048156 0883450048163 0883450048170 08
Full Timken Part Number	0.0030 in0.076 mm
Locking Style	3-7/16 in
Y2 - Geometry Factor	0.0024 in0.060 mm
Y1 - Geometry Factor	0.0039 in0.100 mm
Shaft Tolerance	2400 rpm
Shaft Size	1400 rpm
Pre Install Clearance Min	1000 rpm
Pre Install Clearance Max	Single Concentric