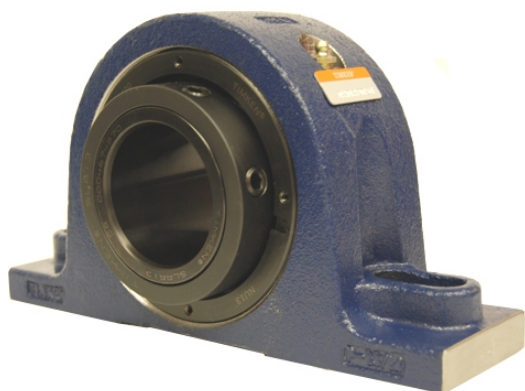


loyal

g Housed Units-Single Concentric Two-Bolt Pillow Block | QAPL18A303S



Bearing No. QAPL18A303S

Weight	Imperial
Bearing Number	4.31
Housing Construction	2.90
UPC Code	45 lb20.40 Kg
Shaft Size Type	0883450332880 0883450332897 0883450332903 0883450332910 0883450332927 0883450332934 0883450332941 08
Full Timken Part Number	0.0030 in0.076 mm
Locking Style	3-3/16 in
Y2 - Geometry Factor	0.0024 in0.060 mm
Y1 - Geometry Factor	0.0039 in0.100 mm
Shaft Tolerance	2400 rpm
Shaft Size	1400 rpm
Pre Install Clearance Min	1000 rpm
Pre Install Clearance Max	Single Concentric