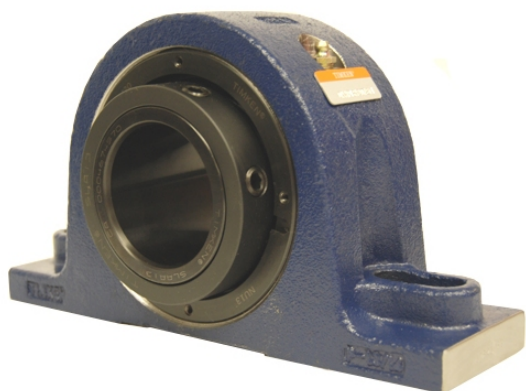


loyal g Housed Units-Single Concentric Two-Bolt Pillow Block | QAPL18A080S



Bearing No. QAPL18A080S

Weight	Metric
Bearing Number	4.31
Housing Construction	2.90
UPC Code	45 lb20.40 Kg
Shaft Size Type	0883450332644 0883450332651 0883450332668 0883450332675 0883450332682 0883450332699 0883450332705 08
Full Timken Part Number	0.0030 in0.076 mm
Locking Style	80 mm
Y2 - Geometry Factor	0.0024 in0.060 mm
Y1 - Geometry Factor	0.0039 in0.100 mm
Shaft Tolerance	2400 rpm
Shaft Size	1400 rpm
Pre Install Clearance Min	1000 rpm
Pre Install Clearance Max	Single Concentric