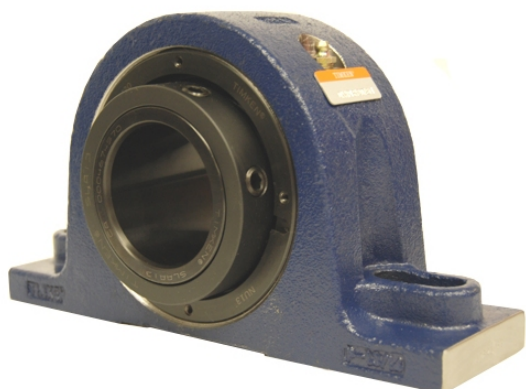


loyal

g Housed Units-Single Concentric Two-Bolt Pillow Block | QAPL13A060S



Bearing No. QAPL13A060S

Weight	Metric
Bearing Number	4.15
Housing Construction	2.79
UPC Code	22.00 lb10.00 Kg
Shaft Size Type	0883450332408 0883450332415 0883450332422 0883450332439 0883450332446 0883450332453 0883450332460 08
Full Timken Part Number	0.0015 in0.038 mm
Locking Style	60 mm
Y2 - Geometry Factor	0.0016 in0.040 mm
Y1 - Geometry Factor	0.0026 in0.065 mm
Shaft Tolerance	3200 rpm
Shaft Size	1800 rpm
Pre Install Clearance Min	1500 rpm
Pre Install Clearance Max	Single Concentric