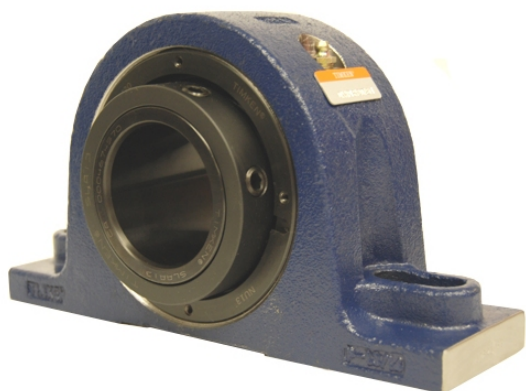


loyal g Housed Units-Single Concentric Two-Bolt Pillow Block | QAPL11A203S



Bearing No. QAPL11A203S

Weight	Imperial
Bearing Number	4.40
Housing Construction	2.95
UPC Code	17.0 lb7.7 Kg
Shaft Size Type	0013992131454 0883450047203 0883450047210 0883450047234 0883450047241 0883450047258 0883450047265 08
Full Timken Part Number	0.0015 in0.038 mm
Locking Style	2-3/16 in
Y2 - Geometry Factor	0.0016 in0.040 mm
Y1 - Geometry Factor	0.0026 in0.065 mm
Shaft Tolerance	3800 rpm
Shaft Size	2200 rpm
Pre Install Clearance Min	1600 rpm
Pre Install Clearance Max	Single Concentric