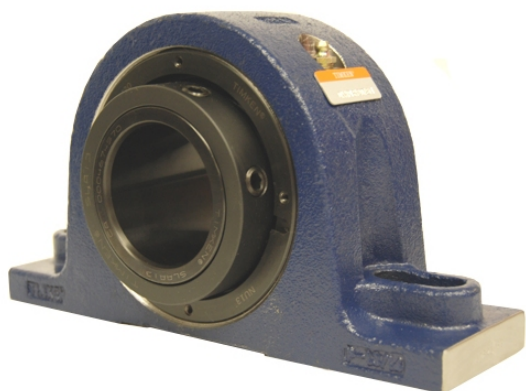


loyal g Housed Units-Single Concentric Two-Bolt Pillow Block | QAPL11A055S



Bearing No. QAPL11A055S

Weight	Metric
Bearing Number	4.40
Housing Construction	2.95
UPC Code	17.0 lb7.7 Kg
Shaft Size Type	0883450332286 0883450332293 0883450332309 0883450332316 0883450332323 0883450332330 0883450332347 08
Full Timken Part Number	0.0015 in0.038 mm
Locking Style	55 mm
Y2 - Geometry Factor	0.0016 in0.040 mm
Y1 - Geometry Factor	0.0026 in0.065 mm
Shaft Tolerance	3800 rpm
Shaft Size	2200 rpm
Pre Install Clearance Min	1600 rpm
Pre Install Clearance Max	Single Concentric