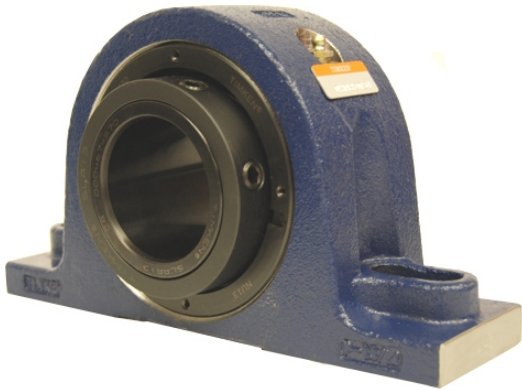


loyal g Housed Units-Single Concentric Two-Bolt Pillow Block | QAPL10A115S



Bearing No. QAPL10A115S

Weight	Imperial
Bearing Number	4.23
Housing Construction	2.84
UPC Code	13 lb5.9 Kg
Shaft Size Type	0883450047005 0883450047012 0883450047036 0883450047043 0883450047050 0883450047067 0883450047074 08
Full Timken Part Number	0.0015 in0.038 mm
Locking Style	1-15/16 in
Y2 - Geometry Factor	0.0016 in0.040 mm
Y1 - Geometry Factor	0.0026 in0.065 mm
Shaft Tolerance	4200 rpm
Shaft Size	2400 rpm
Pre Install Clearance Min	1800 rpm
Pre Install Clearance Max	Single Concentric