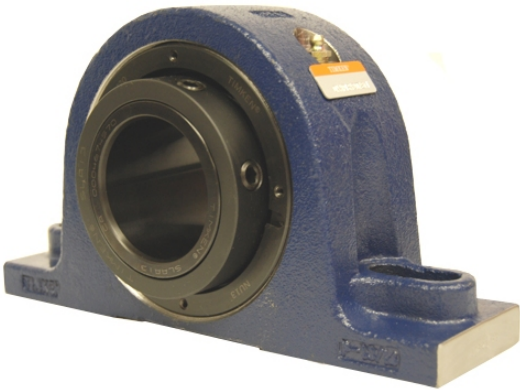


# ing Housed Units-Single Concentric Two-Bolt Pillow Block | QAP15A070S



## Bearing No. QAP15A070S

Weight	Metric
Bearing Number	4.67
Housing Construction	3.14
UPC Code	28 lb12.7 Kg
Shaft Size Type	0883450298209 0883450298216 0883450298223 0883450298230 0883450298247 0883450298254 0883450298261 08
Full Timken Part Number	0.0020 in0.051 mm
Locking Style	70 mm
Y2 - Geometry Factor	0.0020 in0.050 mm
Y1 - Geometry Factor	0.0031 in0.080 mm
Shaft Tolerance	2900 rpm
Shaft Size	1600 rpm
Pre Install Clearance Min	1300 rpm
Pre Install Clearance Max	Single Concentric