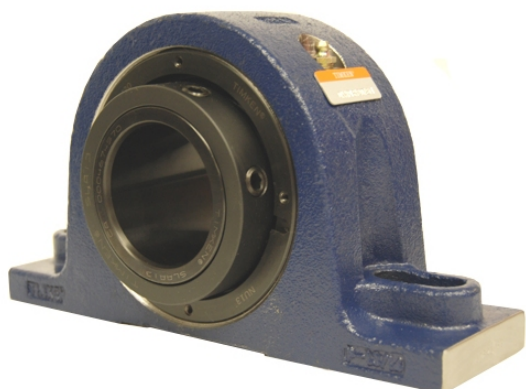


# ing Housed Units-Single Concentric Two-Bolt Pillow Block | QAP11A204S



## Bearing No. QAP11A204S

Weight	Imperial
Bearing Number	4.40
Housing Construction	2.95
UPC Code	17.0 lb7.7 Kg
Shaft Size Type	0883450044608 0883450044615 0883450044639 0883450044646 0883450044653 0883450044660 0883450044677 08
Full Timken Part Number	0.0015 in0.038 mm
Locking Style	2-1/4 in
Y2 - Geometry Factor	0.0016 in0.040 mm
Y1 - Geometry Factor	0.0026 in0.065 mm
Shaft Tolerance	3800 rpm
Shaft Size	2200 rpm
Pre Install Clearance Min	1600 rpm
Pre Install Clearance Max	Single Concentric