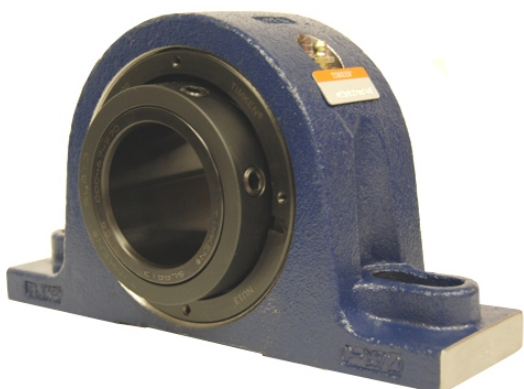


ing Housed Units-Single Concentric Two-Bolt Pillow Block | QAP13A060S



Bearing No. QAP13A060S

Weight	Metric
Bearing Number	4.15
Housing Construction	2.79
UPC Code	22.00 lb10.00 Kg
Shaft Size Type	0883450330848 0883450330855 0883450330862 0883450330879 0883450330886 0883450330893 0883450330909 08
Full Timken Part Number	0.0015 in0.038 mm
Locking Style	60 mm
Y2 - Geometry Factor	0.0016 in0.040 mm
Y1 - Geometry Factor	0.0026 in0.065 mm
Shaft Tolerance	3200 rpm
Shaft Size	1800 rpm
Pre Install Clearance Min	1500 rpm
Pre Install Clearance Max	Single Concentric