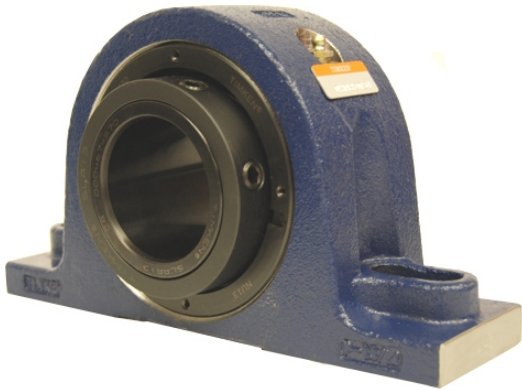


ing Housed Units-Single Concentric Two-Bolt Pillow Block | QAP20A315S



Bearing No. QAP20A315S

Weight	Imperial
Bearing Number	4.24
Housing Construction	2.85
UPC Code	59.0 lb26.8 Kg
Shaft Size Type	0883450045605 0883450045612 0883450045636 0883450045643 0883450045650 0883450045667 0883450045674 08
Full Timken Part Number	0.0030 in0.076 mm
Locking Style	3-15/16 in
Y2 - Geometry Factor	0.0030 in0.075 mm
Y1 - Geometry Factor	0.0047 in0.120 mm
Shaft Tolerance	2000 rpm
Shaft Size	1200 rpm
Pre Install Clearance Min	900 rpm
Pre Install Clearance Max	Single Concentric