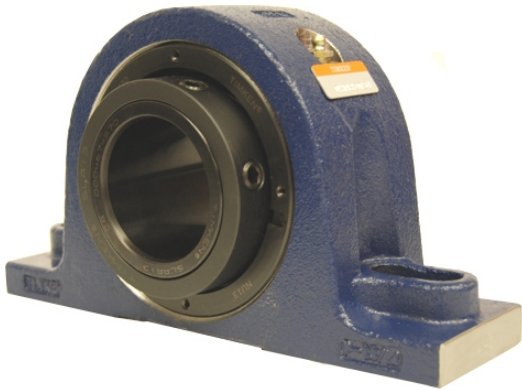


ing Housed Units-Single Concentric Two-Bolt Pillow Block | QAP18A307S



Bearing No. QAP18A307S

Weight	Imperial
Bearing Number	4.31
Housing Construction	2.90
UPC Code	45 lb20.40 Kg
Shaft Size Type	0883450045407 0883450045414 0883450045438 0883450045445 0883450045452 0883450045469 0883450045476 08
Full Timken Part Number	0.0030 in0.076 mm
Locking Style	3-7/16 in
Y2 - Geometry Factor	0.0024 in0.060 mm
Y1 - Geometry Factor	0.0039 in0.100 mm
Shaft Tolerance	2400 rpm
Shaft Size	1400 rpm
Pre Install Clearance Min	1000 rpm
Pre Install Clearance Max	Single Concentric