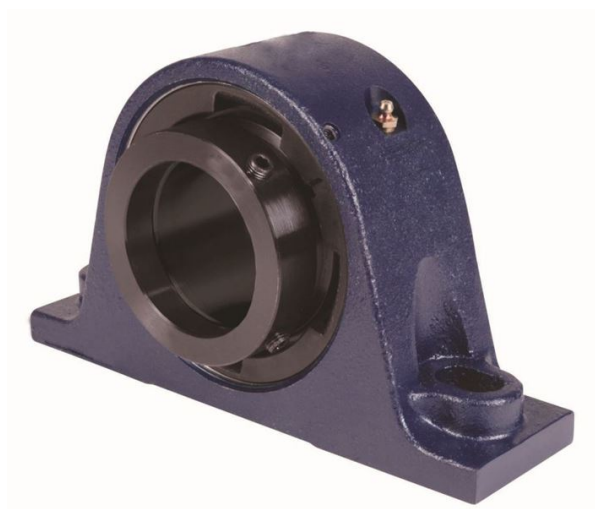


royal Bearing Housed Units-Eccentric Two-Bolt Pillow Block | QMSN20J100S



Bearing No. QMSN20J100S

Weight	Metric
Bearing Number	4.24
Housing Construction	2.85
UPC Code	79 lb35.9 Kg
Shaft Size Type	0883450098724 0883450098731 0883450098755 0883450098762 0883450098779 0883450098786 0883450098793 08
Full Timken Part Number	0.0030 in0.076 mm
Locking Style	100 mm
Y2 - Geometry Factor	0.0030 in0.075 mm
Y1 - Geometry Factor	0.0047 in0.120 mm
Shaft Tolerance	2000 rpm
Shaft Size	1200 rpm
Pre Install Clearance Min	900 rpm
Pre Install Clearance Max	Eccentric