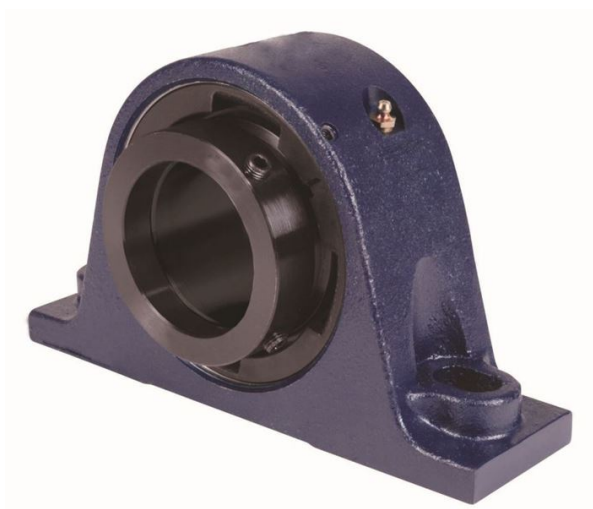


# royal Bearing Housed Units-Eccentric Two-Bolt Pillow Block | QMSN18J303S



## Bearing No. QMSN18J303S

Weight	Imperial
Bearing Number	4.31
Housing Construction	2.90
UPC Code	56 lb25.5 Kg
Shaft Size Type	0883450098328 0883450098335 0883450098359 0883450098366 0883450098373 0883450098380 0883450098397 08
Full Timken Part Number	0.0030 in0.076 mm
Locking Style	3-3/16 in
Y2 - Geometry Factor	0.0024 in0.060 mm
Y1 - Geometry Factor	0.0039 in0.100 mm
Shaft Tolerance	2400 rpm
Shaft Size	1400 rpm
Pre Install Clearance Min	1000 rpm
Pre Install Clearance Max	Eccentric