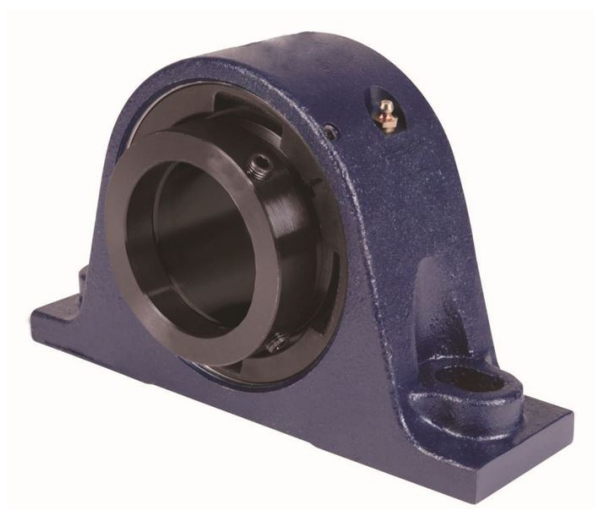


royal Bearing Housed Units-Eccentric Two-Bolt Pillow Block | QMSN18J090S



Bearing No. QMSN18J090S

Weight	Metric
Bearing Number	4.31
Housing Construction	2.90
UPC Code	56 lb25.5 Kg
Shaft Size Type	0883450098229 0883450098236 0883450098250 0883450098267 0883450098274 0883450098281 0883450098298 08
Full Timken Part Number	0.0030 in0.076 mm
Locking Style	90 mm
Y2 - Geometry Factor	0.0024 in0.060 mm
Y1 - Geometry Factor	0.0039 in0.100 mm
Shaft Tolerance	2400 rpm
Shaft Size	1400 rpm
Pre Install Clearance Min	1000 rpm
Pre Install Clearance Max	Eccentric