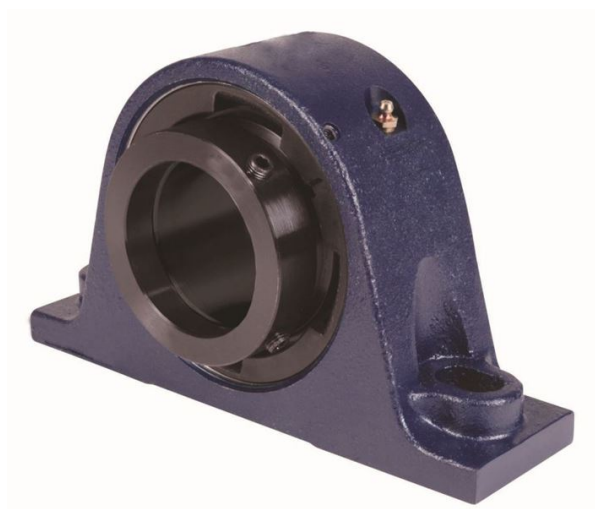


royal Bearing Housed Units-Eccentric Two-Bolt Pillow Block | QMSN15J215S



Bearing No. QMSN15J215S

Weight	Imperial
Bearing Number	4.67
Housing Construction	3.14
UPC Code	46.0 lb20.9 Kg
Shaft Size Type	0883450097826 0883450097833 0883450097857 0883450097864 0883450097871 0883450097888 0883450097895 08
Full Timken Part Number	0.0020 in0.051 mm
Locking Style	2-15/16 in
Y2 - Geometry Factor	0.0020 in0.050 mm
Y1 - Geometry Factor	0.0031 in0.080 mm
Shaft Tolerance	2900 rpm
Shaft Size	1600 rpm
Pre Install Clearance Min	1300 rpm
Pre Install Clearance Max	Eccentric