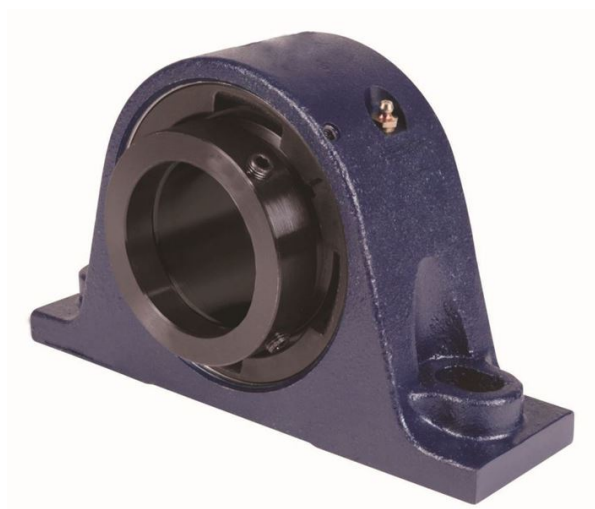


royal Bearing Housed Units-Eccentric Two-Bolt Pillow Block | QMSN15J075S



Bearing No. QMSN15J075S

Weight	Metric
Bearing Number	4.67
Housing Construction	3.14
UPC Code	46.0 lb20.9 Kg
Shaft Size Type	0883450097529 0883450097536 0883450097550 0883450097567 0883450097574 0883450097581 0883450097598 08
Full Timken Part Number	0.0020 in0.051 mm
Locking Style	75 mm
Y2 - Geometry Factor	0.0020 in0.050 mm
Y1 - Geometry Factor	0.0031 in0.080 mm
Shaft Tolerance	2900 rpm
Shaft Size	1600 rpm
Pre Install Clearance Min	1300 rpm
Pre Install Clearance Max	Eccentric