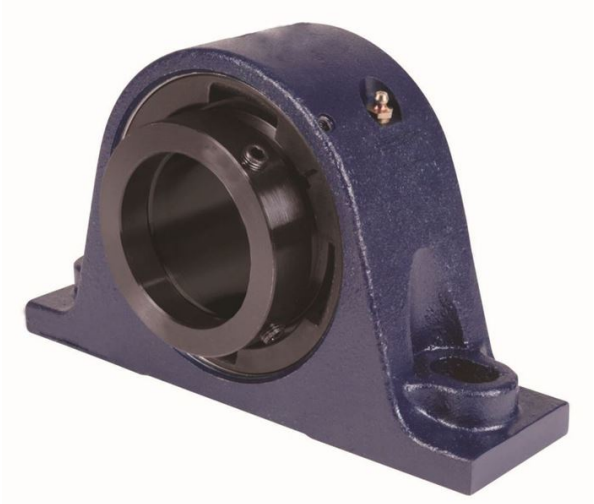


royal Bearing Housed Units-Eccentric Two-Bolt Pillow Block | QMSN13J060S



Bearing No. QMSN13J060S

Weight	Metric
Bearing Number	4.15
Housing Construction	2.79
UPC Code	35 lb15.90 Kg
Shaft Size Type	0883450097024 0883450097031 0883450097055 0883450097062 0883450097079 0883450097086 0883450097093 08
Full Timken Part Number	0.0015 in0.038 mm
Locking Style	60 mm
Y2 - Geometry Factor	0.0016 in0.040 mm
Y1 - Geometry Factor	0.0026 in0.065 mm
Shaft Tolerance	3200 rpm
Shaft Size	1800 rpm
Pre Install Clearance Min	1500 rpm
Pre Install Clearance Max	Eccentric