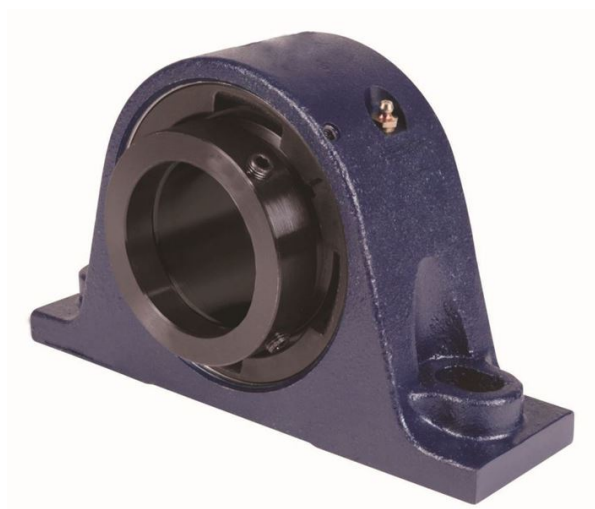


# royal Bearing Housed Units-Eccentric Two-Bolt Pillow Block | QMSN10J050S



## Bearing No. QMSN10J050S

Weight	Metric
Bearing Number	4.23
Housing Construction	2.84
UPC Code	28 lb12.7 Kg
Shaft Size Type	0883450096423 0883450096430 0883450096454 0883450096461 0883450096478 0883450096485 0883450096492 08
Full Timken Part Number	0.0015 in0.038 mm
Locking Style	50 mm
Y2 - Geometry Factor	0.0016 in0.040 mm
Y1 - Geometry Factor	0.0026 in0.065 mm
Shaft Tolerance	4200 rpm
Shaft Size	2400 rpm
Pre Install Clearance Min	1800 rpm
Pre Install Clearance Max	Eccentric