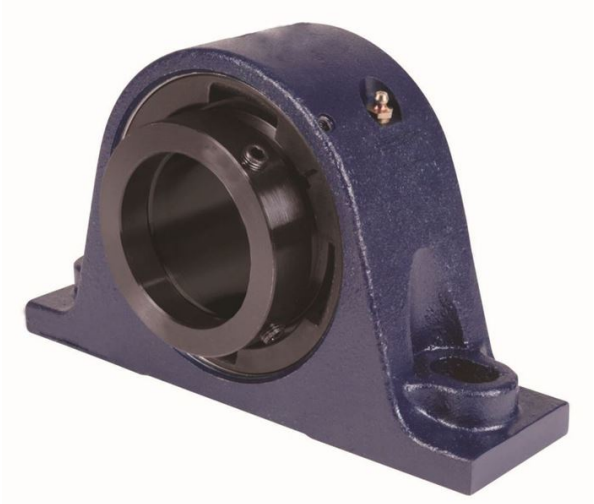


# royal Bearing Housed Units-Eccentric Two-Bolt Pillow Block | QMSN09J111S



## Bearing No. QMSN09J111S

Weight	Imperial
Bearing Number	3.93
Housing Construction	2.64
UPC Code	23 lb10.5 Kg
Shaft Size Type	0883450096225 0883450096232 0883450096256 0883450096263 0883450096270 0883450096287 0883450096294 08
Full Timken Part Number	0.0015 in0.038 mm
Locking Style	1-11/16 in
Y2 - Geometry Factor	0.0014 in0.035 mm
Y1 - Geometry Factor	0.0022 in0.055 mm
Shaft Tolerance	4500 rpm
Shaft Size	2700 rpm
Pre Install Clearance Min	1950 rpm
Pre Install Clearance Max	Eccentric