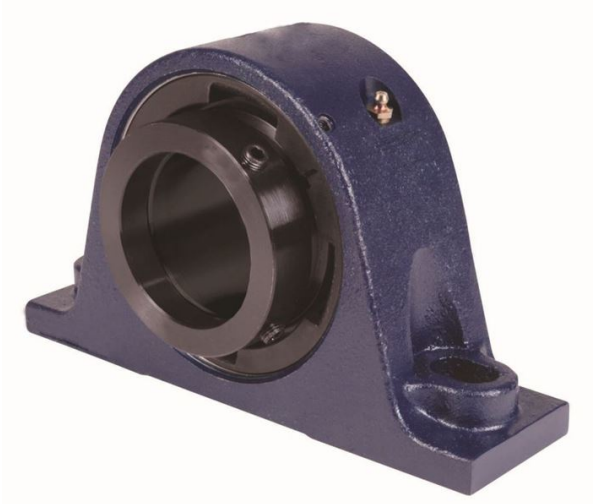


royal Bearing Housed Units-Eccentric Two-Bolt Pillow Block | QMSN09J045S



Bearing No. QMSN09J045S

Weight	Metric
Bearing Number	3.93
Housing Construction	2.64
UPC Code	23 lb10.5 Kg
Shaft Size Type	0883450096126 0883450096133 0883450096157 0883450096164 0883450096171 0883450096188 0883450096195 08
Full Timken Part Number	0.0015 in0.038 mm
Locking Style	45 mm
Y2 - Geometry Factor	0.0014 in0.035 mm
Y1 - Geometry Factor	0.0022 in0.055 mm
Shaft Tolerance	4500 rpm
Shaft Size	2700 rpm
Pre Install Clearance Min	1950 rpm
Pre Install Clearance Max	Eccentric