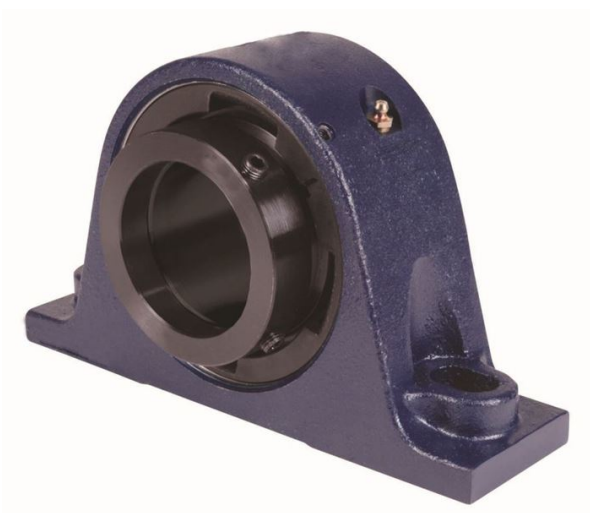


Bearing Housed Units-Eccentric Two-Bolt Pillow Block | QMPXT15J215S



Bearing No. QMPXT15J215S

Weight	Imperial
Bearing Number	4.67
Housing Construction	3.14
UPC Code	28 lb12.7 Kg
Shaft Size Type	0883450141475 0883450141482 0883450141499 0883450141505 0883450141512 0883450141529 0883450141536 08
Full Timken Part Number	0.0020 in0.051 mm
Locking Style	2-15/16 in
Y2 - Geometry Factor	0.0020 in0.050 mm
Y1 - Geometry Factor	0.0031 in0.080 mm
Shaft Tolerance	2900 rpm
Shaft Size	1600 rpm
Pre Install Clearance Min	1300 rpm
Pre Install Clearance Max	Eccentric