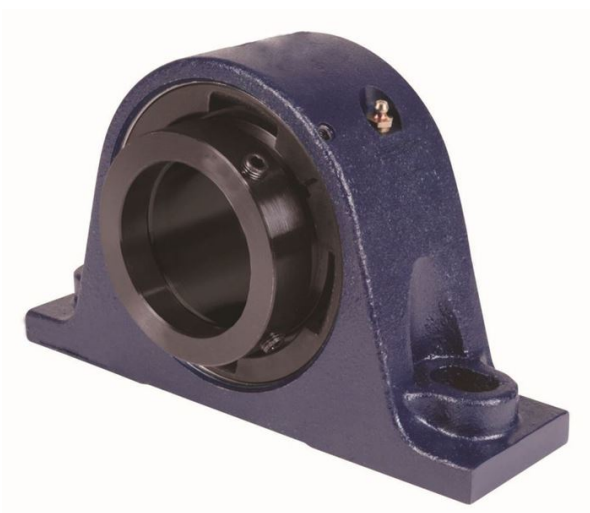


# Bearing Housed Units-Eccentric Two-Bolt Pillow Block | QMPXT15J070S



## Bearing No. QMPXT15J070S

Weight	Metric
Bearing Number	4.67
Housing Construction	3.14
UPC Code	28 lb12.7 Kg
Shaft Size Type	0883450141376 0883450141383 0883450141390 0883450141406 0883450141413 0883450141420 0883450141437 08
Full Timken Part Number	0.0020 in0.051 mm
Locking Style	70 mm
Y2 - Geometry Factor	0.0020 in0.050 mm
Y1 - Geometry Factor	0.0031 in0.080 mm
Shaft Tolerance	2900 rpm
Shaft Size	1600 rpm
Pre Install Clearance Min	1300 rpm
Pre Install Clearance Max	Eccentric