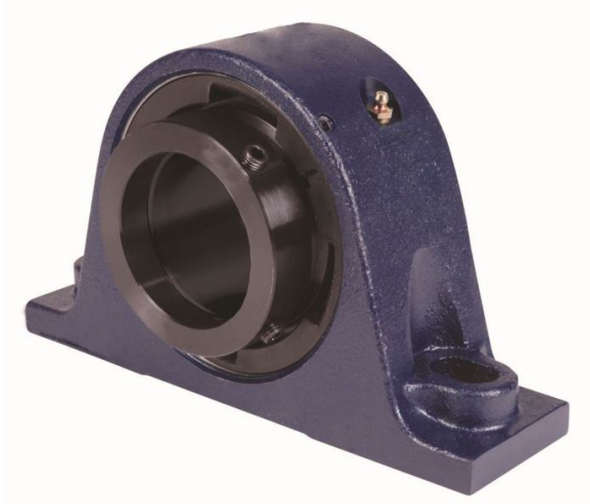


Bearing Housed Units-Eccentric Two-Bolt Pillow Block | QMPXT13J208S



Bearing No. QMPXT13J208S

Weight	Imperial
Bearing Number	4.15
Housing Construction	2.79
UPC Code	22.00 lb10.00 Kg
Shaft Size Type	0883450140973 0883450140997 0883450141000 0883450141017 0883450141024 0883450141031 0883450141048 08
Full Timken Part Number	0.0015 in0.038 mm
Locking Style	2-1/2 in
Y2 - Geometry Factor	0.0016 in0.040 mm
Y1 - Geometry Factor	0.0026 in0.065 mm
Shaft Tolerance	3200 rpm
Shaft Size	1800 rpm
Pre Install Clearance Min	1500 rpm
Pre Install Clearance Max	Eccentric