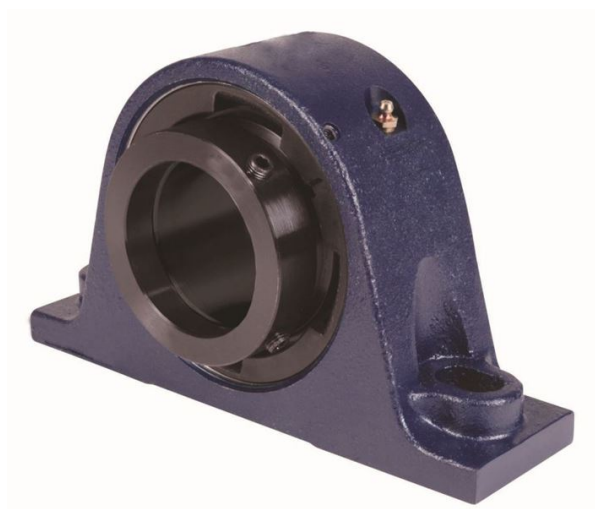


royal Bearing Housed Units-Eccentric Two-Bolt Pillow Block | QMPL18J307S



Bearing No. QMPL18J307S

Weight	Imperial
Bearing Number	4.31
Housing Construction	2.90
UPC Code	45 lb20.40 Kg
Shaft Size Type	0883450088725 0883450088732 0883450088756 0883450088763 0883450088770 0883450088787 0883450088794 08
Full Timken Part Number	0.0030 in0.076 mm
Locking Style	3-7/16 in
Y2 - Geometry Factor	0.0024 in0.060 mm
Y1 - Geometry Factor	0.0039 in0.100 mm
Shaft Tolerance	2400 rpm
Shaft Size	1400 rpm
Pre Install Clearance Min	1000 rpm
Pre Install Clearance Max	Eccentric