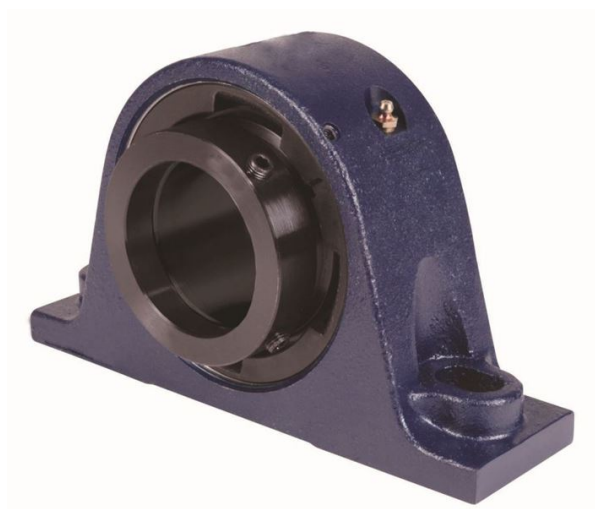


royal Bearing Housed Units-Eccentric Two-Bolt Pillow Block | QMPL15J211S



Bearing No. QMPL15J211S

Weight	Imperial
Bearing Number	4.67
Housing Construction	3.14
UPC Code	28 lb12.7 Kg
Shaft Size Type	0883450087926 0883450087933 0883450087957 0883450087964 0883450087971 0883450087988 0883450087995 08
Full Timken Part Number	0.0020 in0.051 mm
Locking Style	2-11/16 in
Y2 - Geometry Factor	0.0020 in0.050 mm
Y1 - Geometry Factor	0.0031 in0.080 mm
Shaft Tolerance	2900 rpm
Shaft Size	1600 rpm
Pre Install Clearance Min	1300 rpm
Pre Install Clearance Max	Eccentric