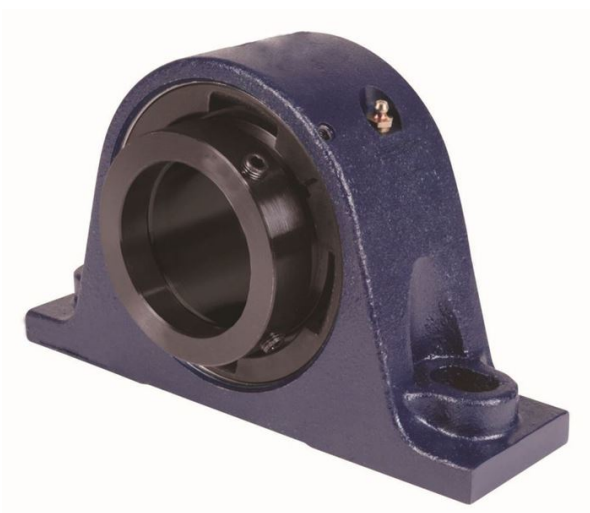


loyal er Bearing Housed Units-Eccentric Two-Bolt Pillow Block | QMP20J315S



Bearing No. QMP20J315S

Weight	Imperial
Bearing Number	4.24
Housing Construction	2.85
UPC Code	59.0 lb26.8 Kg
Shaft Size Type	0883450083027 0883450083034 0883450083058 0883450083065 0883450083072 0883450083089 0883450083096 08
Full Timken Part Number	0.0030 in0.076 mm
Locking Style	3-15/16 in
Y2 - Geometry Factor	0.0030 in0.075 mm
Y1 - Geometry Factor	0.0047 in0.120 mm
Shaft Tolerance	2000 rpm
Shaft Size	1200 rpm
Pre Install Clearance Min	900 rpm
Pre Install Clearance Max	Eccentric