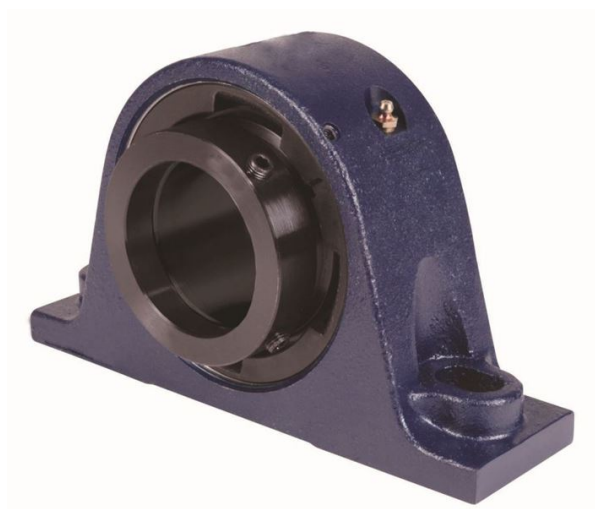


loyal er Bearing Housed Units-Eccentric Two-Bolt Pillow Block | QMP18J304S



Bearing No. QMP18J304S

Weight	Imperial
Bearing Number	4.31
Housing Construction	2.90
UPC Code	45 lb20.40 Kg
Shaft Size Type	0883450082426 0883450082433 0883450082457 0883450082464 0883450082471 0883450082488 0883450082495 08
Full Timken Part Number	0.0030 in0.076 mm
Locking Style	3-1/4 in
Y2 - Geometry Factor	0.0024 in0.060 mm
Y1 - Geometry Factor	0.0039 in0.100 mm
Shaft Tolerance	2400 rpm
Shaft Size	1400 rpm
Pre Install Clearance Min	1000 rpm
Pre Install Clearance Max	Eccentric