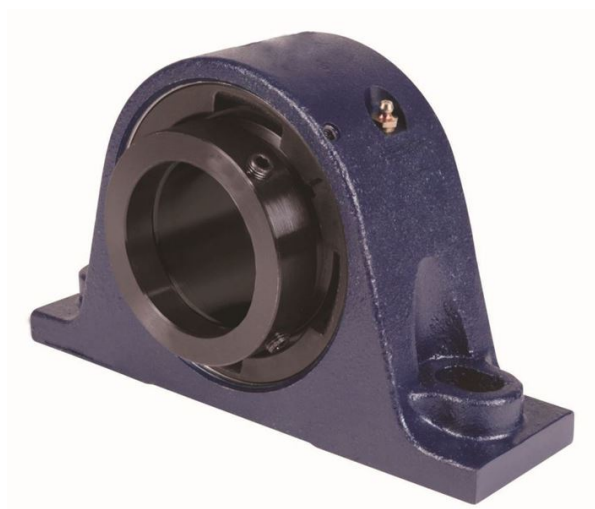


loyal er Bearing Housed Units-Eccentric Two-Bolt Pillow Block | QMP18J090S



Bearing No. QMP18J090S

Weight	Metric
Bearing Number	4.31
Housing Construction	2.90
UPC Code	45 lb20.40 Kg
Shaft Size Type	0883450082228 0883450082235 0883450082259 0883450082266 0883450082273 0883450082280 0883450082297 08
Full Timken Part Number	0.0030 in0.076 mm
Locking Style	90 mm
Y2 - Geometry Factor	0.0024 in0.060 mm
Y1 - Geometry Factor	0.0039 in0.100 mm
Shaft Tolerance	2400 rpm
Shaft Size	1400 rpm
Pre Install Clearance Min	1000 rpm
Pre Install Clearance Max	Eccentric