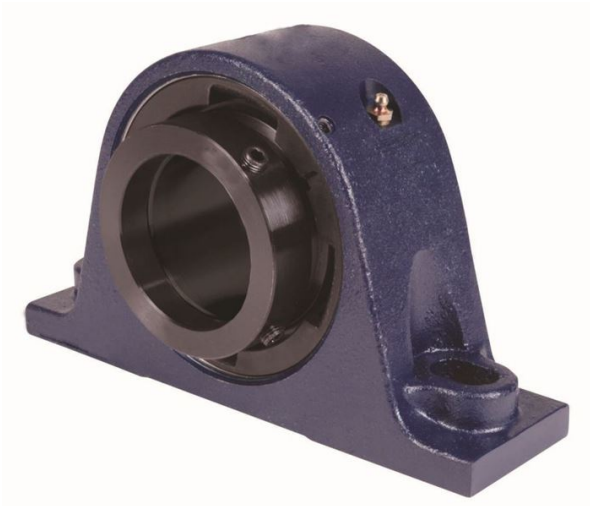


loyal er Bearing Housed Units-Eccentric Two-Bolt Pillow Block | QMP15J300S



Bearing No. QMP15J300S

| | |
|---------------------------|------------------------------------------------------------------------------------------------------------------------|
| Weight | Imperial |
| Bearing Number | 4.67 |
| Housing Construction | 3.14 |
| UPC Code | 28 lb12.7 Kg |
| Shaft Size Type | 0883450082020 0883450082037 0883450082051 0883450082068 0883450082075 0883450082082 0883450082099 08 |
| Full Timken Part Number | 0.0020 in0.051 mm |
| Locking Style | 3 in |
| Y2 - Geometry Factor | 0.0020 in0.050 mm |
| Y1 - Geometry Factor | 0.0031 in0.080 mm |
| Shaft Tolerance | 2900 rpm |
| Shaft Size | 1600 rpm |
| Pre Install Clearance Min | 1300 rpm |
| Pre Install Clearance Max | Eccentric |