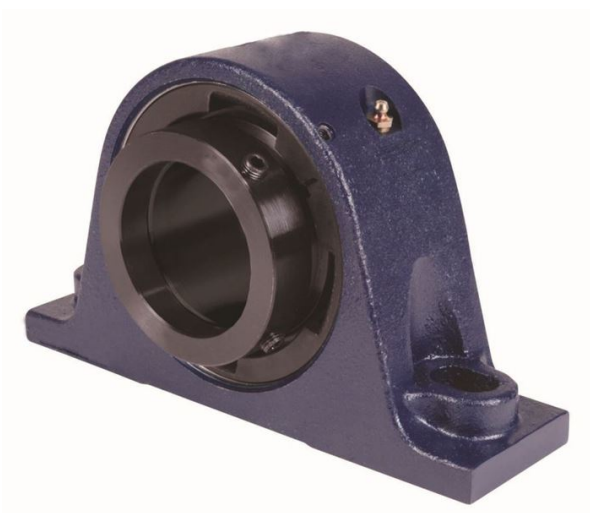


# loyal er Bearing Housed Units-Eccentric Two-Bolt Pillow Block | QMP15J211S



## Bearing No. QMP15J211S

Weight	Imperial
Bearing Number	4.67
Housing Construction	3.14
UPC Code	28 lb12.7 Kg
Shaft Size Type	0883450081726 0883450081733 0883450081757 0883450081764 0883450081771 0883450081788 0883450081795 08
Full Timken Part Number	0.0020 in0.051 mm
Locking Style	2-11/16 in
Y2 - Geometry Factor	0.0020 in0.050 mm
Y1 - Geometry Factor	0.0031 in0.080 mm
Shaft Tolerance	2900 rpm
Shaft Size	1600 rpm
Pre Install Clearance Min	1300 rpm
Pre Install Clearance Max	Eccentric