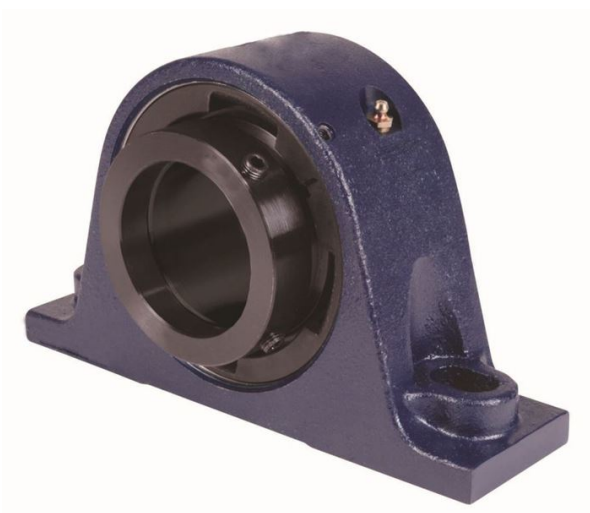


loyal er Bearing Housed Units-Eccentric Two-Bolt Pillow Block | QMP15J070S



Bearing No. QMP15J070S

Weight	Metric
Bearing Number	4.67
Housing Construction	3.14
UPC Code	28 lb12.7 Kg
Shaft Size Type	0883450081528 0883450081535 0883450081559 0883450081566 0883450081573 0883450081580 0883450081597 08
Full Timken Part Number	0.0020 in0.051 mm
Locking Style	70 mm
Y2 - Geometry Factor	0.0020 in0.050 mm
Y1 - Geometry Factor	0.0031 in0.080 mm
Shaft Tolerance	2900 rpm
Shaft Size	1600 rpm
Pre Install Clearance Min	1300 rpm
Pre Install Clearance Max	Eccentric