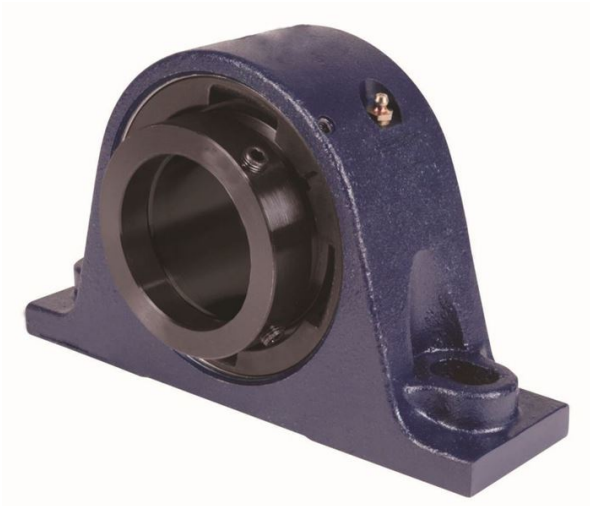


loyal er Bearing Housed Units-Eccentric Two-Bolt Pillow Block | QMP09J111S



Bearing No. QMP09J111S

Weight	Imperial
Bearing Number	3.93
Housing Construction	2.64
UPC Code	10 lb4.5 Kg
Shaft Size Type	0883450080521 0883450080538 0883450080552 0883450080569 0883450080576 0883450080583 0883450080590 08
Full Timken Part Number	0.0015 in0.038 mm
Locking Style	1-11/16 in
Y2 - Geometry Factor	0.0014 in0.035 mm
Y1 - Geometry Factor	0.0022 in0.055 mm
Shaft Tolerance	4500 rpm
Shaft Size	2700 rpm
Pre Install Clearance Min	1950 rpm
Pre Install Clearance Max	Eccentric