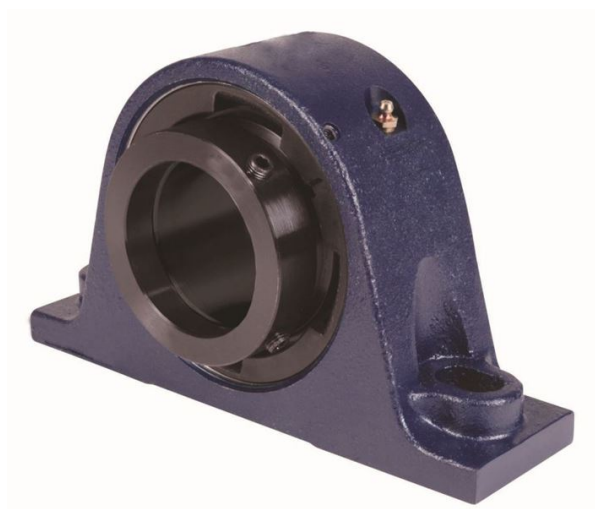


loyal er Bearing Housed Units-Eccentric Two-Bolt Pillow Block | QMP10J050S



Bearing No. QMP10J050S

Weight	Metric
Bearing Number	4.23
Housing Construction	2.84
UPC Code	13 lb5.9 Kg
Shaft Size Type	0883450080729 0883450080736 0883450080750 0883450080767 0883450080774 0883450080781 0883450080798 08
Full Timken Part Number	0.0015 in0.038 mm
Locking Style	50 mm
Y2 - Geometry Factor	0.0016 in0.040 mm
Y1 - Geometry Factor	0.0026 in0.065 mm
Shaft Tolerance	4200 rpm
Shaft Size	2400 rpm
Pre Install Clearance Min	1800 rpm
Pre Install Clearance Max	Eccentric