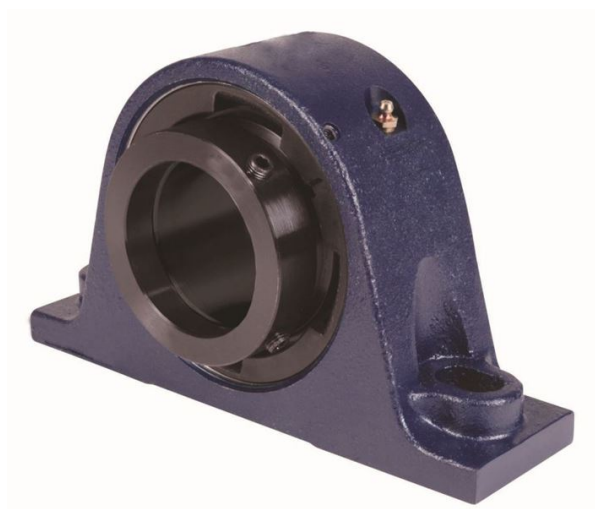


loyal er Bearing Housed Units-Eccentric Two-Bolt Pillow Block | QMP09J112S



Bearing No. QMP09J112S

| | |
|---------------------------|--|
| Weight | Imperial |
| Bearing Number | 3.93 |
| Housing Construction | 2.64 |
| UPC Code | 10 lb4.5 Kg |
| Shaft Size Type | 0883450080620 0883450080637 0883450080651 0883450080668 0883450080675 0883450080682 0883450080699 08 |
| Full Timken Part Number | 0.0015 in0.038 mm |
| Locking Style | 1-3/4 in |
| Y2 - Geometry Factor | 0.0014 in0.035 mm |
| Y1 - Geometry Factor | 0.0022 in0.055 mm |
| Shaft Tolerance | 4500 rpm |
| Shaft Size | 2700 rpm |
| Pre Install Clearance Min | 1950 rpm |
| Pre Install Clearance Max | Eccentric |