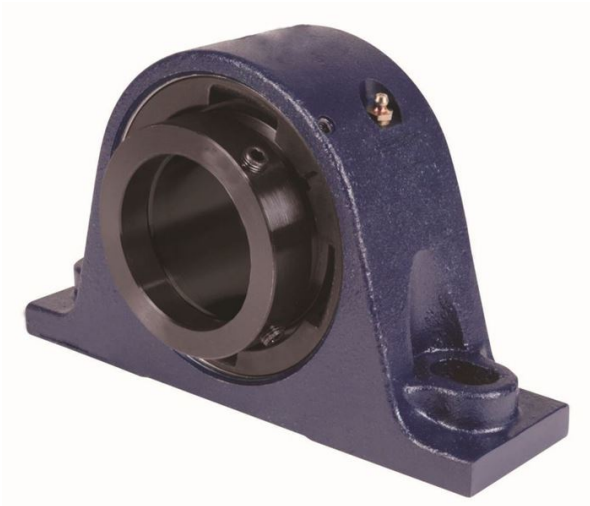


loyal er Bearing Housed Units-Eccentric Two-Bolt Pillow Block | QMP09J045S



Bearing No. QMP09J045S

Weight	Metric
Bearing Number	3.93
Housing Construction	2.64
UPC Code	10 lb4.5 Kg
Shaft Size Type	0883450249287 0883450249621 0883450294423 0883450294430 0883450294447 0883450294454 0883450294461 08
Full Timken Part Number	0.0015 in0.038 mm
Locking Style	45 mm
Y2 - Geometry Factor	0.0014 in0.035 mm
Y1 - Geometry Factor	0.0022 in0.055 mm
Shaft Tolerance	4500 rpm
Shaft Size	2700 rpm
Pre Install Clearance Min	1950 rpm
Pre Install Clearance Max	Eccentric