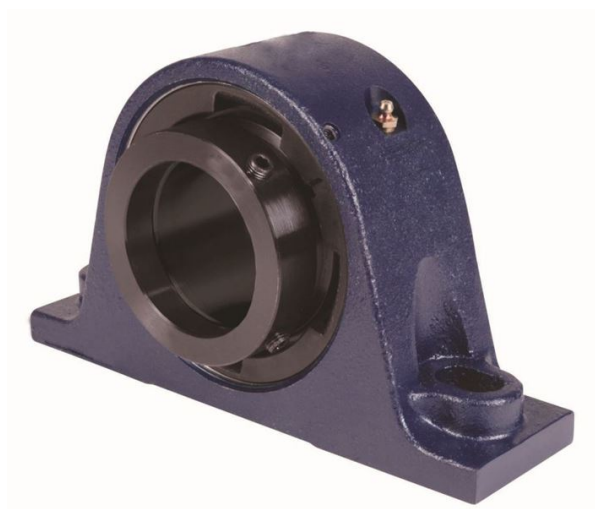


# loyal er Bearing Housed Units-Eccentric Two-Bolt Pillow Block | QMP08J107S



## Bearing No. QMP08J107S

Weight	Imperial
Bearing Number	3.67
Housing Construction	2.47
UPC Code	9.0 lb4.10 Kg
Shaft Size Type	0883450080323 0883450080330 0883450080354 0883450080361 0883450080378 0883450080385 0883450080392 08
Full Timken Part Number	0.0010 in0.025 mm
Locking Style	1-7/16 in
Y2 - Geometry Factor	0.0012 in0.030 mm
Y1 - Geometry Factor	0.0018 in0.045 mm
Shaft Tolerance	4500 rpm
Shaft Size	2700 rpm
Pre Install Clearance Min	1950 rpm
Pre Install Clearance Max	Eccentric