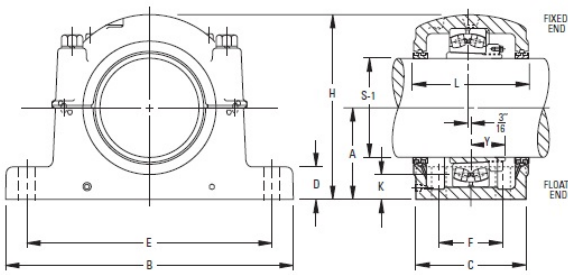


Bearing No. SAF 23028K 4/13/16



|                           |                   |
|---------------------------|-------------------|
| Weight                    | 13.2500 in        |
| Bearing Number            | LOR 120           |
| Housing Construction      | Triple Ring Seal  |
| UPC Code                  | SAF028K x 4-13/16 |
| Shaft Size Type           | 10.25 in          |
| Full Timken Part Number   | SAF23028K4-13/16  |
| Locking Style             | 2.75 in           |
| Y2 - Geometry Factor      | 14.5000 in        |
| Y1 - Geometry Factor      | 4 13/16 in        |
| Shaft Tolerance           | 2.1250 in         |
| Shaft Size                | 4.750 in          |
| Pre Install Clearance Min | 4                 |
| Pre Install Clearance Max | 0.750 in          |