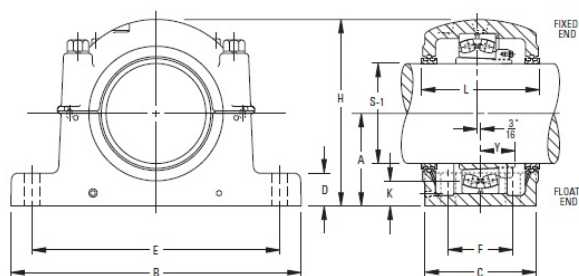


loyal

Mounting Pillow Block SDAF231K and SDAF232K Series | SDAF 23248K 9



Bearing No. SDAF 23248K 9

Weight	29.0000 in
Bearing Number	ER 828
Housing Construction	A5679
UPC Code	SDAF3248K x 9
Shaft Size Type	20.8750 in
Full Timken Part Number	SDAF23248K9
Locking Style	8.75 in
Y2 - Geometry Factor	30.5000 in
Y1 - Geometry Factor	29.7500 in
Shaft Tolerance	9 in
Shaft Size	3.7500 in
Pre Install Clearance Min	13.1250 in
Pre Install Clearance Max	1.625 in