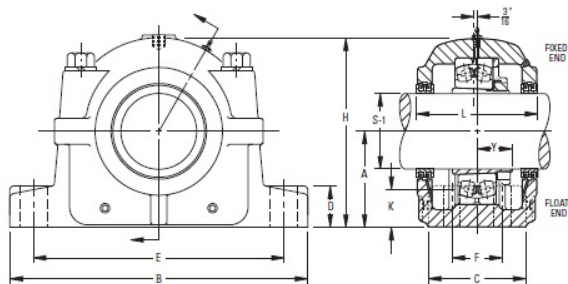


# Fixed Bore Mounting Pillow Block SAF225 and SAF226 Series | SAF 22520



Bearing No. SAF 22520

Weight	13.1250 in
Bearing Number	LOR 102
Housing Construction	Triple Ring Seal
UPC Code	SAF520
Shaft Size Type	8.6875 in
Full Timken Part Number	SAF22520
Locking Style	11.6250 in
Y2 - Geometry Factor	12.3750 in
Y1 - Geometry Factor	3 7/16 in
Shaft Tolerance	1.75 in
Shaft Size	4.375 in
Pre Install Clearance Min	0.875 in
Pre Install Clearance Max	1.625 in