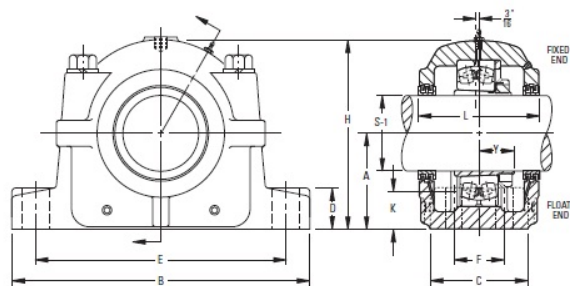


Fixed Bore Mounting Pillow Block SAF225 and SAF226 Series | SAF 22518



Bearing No. SAF 22518

Weight	11.6250 in
Bearing Number	LOR 69
Housing Construction	Triple Ring Seal
UPC Code	SAF518
Shaft Size Type	7.7500 in
Full Timken Part Number	SAF22518
Locking Style	10.3750 in
Y2 - Geometry Factor	11.0000 in
Y1 - Geometry Factor	3 3/16 in
Shaft Tolerance	1.50 in
Shaft Size	3.875 in
Pre Install Clearance Min	0.750 in
Pre Install Clearance Max	1.375 in