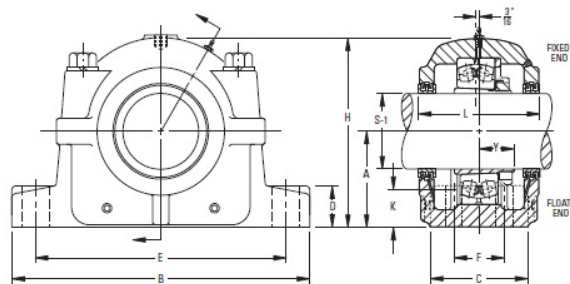


# Fixed Bore Mounting Pillow Block SAF225 and SAF226 Series | SAF 22510



Bearing No. SAF 22510

Weight	7.0000 in
Bearing Number	LOR 20
Housing Construction	Triple Ring Seal
UPC Code	SAF 510
Shaft Size Type	4.75 in
Full Timken Part Number	SAF22510
Locking Style	6.5000 in
Y2 - Geometry Factor	6.7500 in
Y1 - Geometry Factor	1 11/16 in
Shaft Tolerance	0.9375 in
Shaft Size	2.3750 in
Pre Install Clearance Min	0.500 in
Pre Install Clearance Max	0.75 in