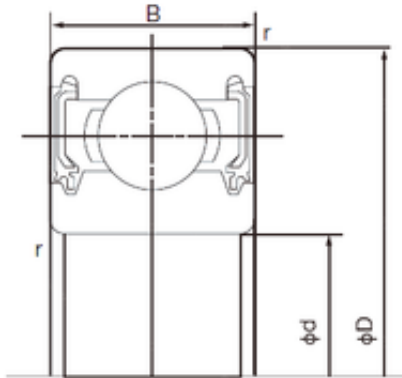


Bearing No. 6001-2NKE



D	28 mm
d	12 mm
B	8 mm
C	8 mm
r min.	0.3 mm
Weight	0.023 Kg
da min.	14 mm
Da max.	26 mm
ra max.	0.3 mm
Size (mm)	12x28x8
Width (mm)	8
Bearing number	6001-2NKE
Bore Diameter (mm)	12
Outer Diameter (mm)	28
Basic dynamic load rating (C)	5,1 kN
Basic static load rating (C0)	2,39 kN